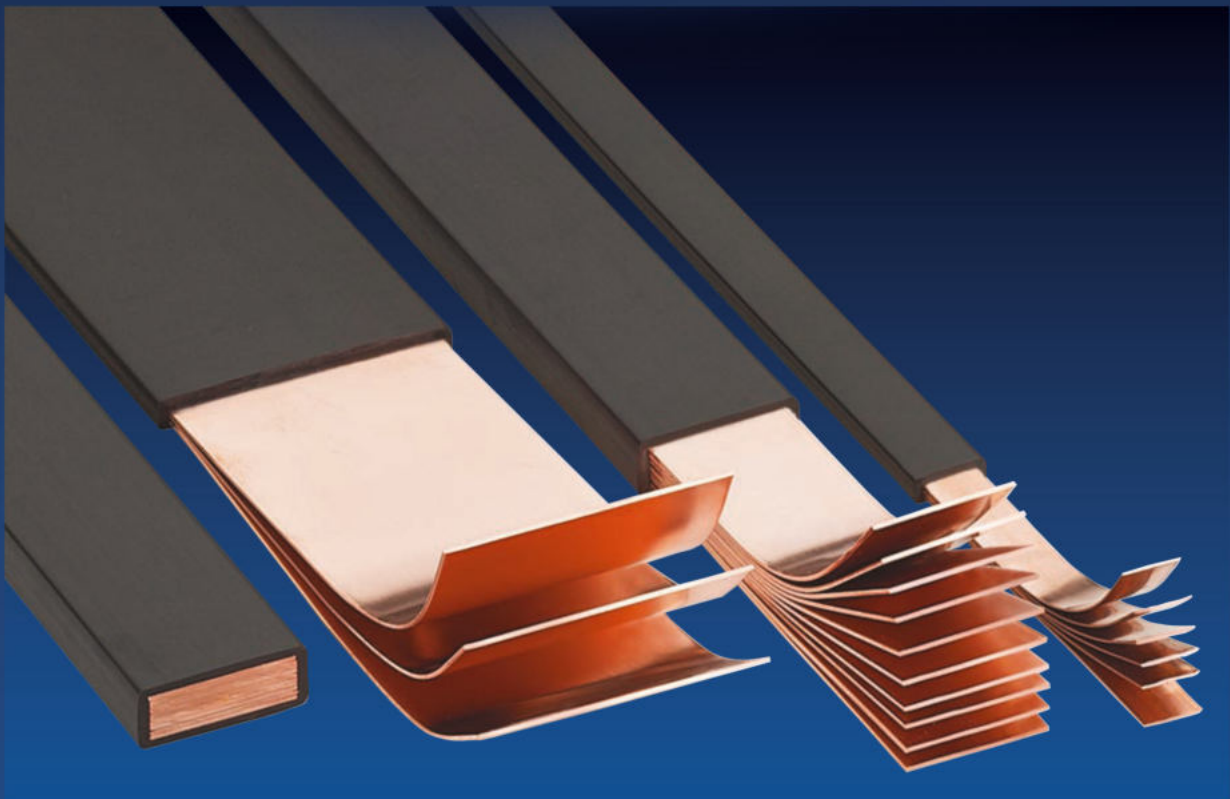




KUPFERRHEYDT



**Maxiflex® – flexible insulated
copper conductors by
KUPFERRHEYDT**

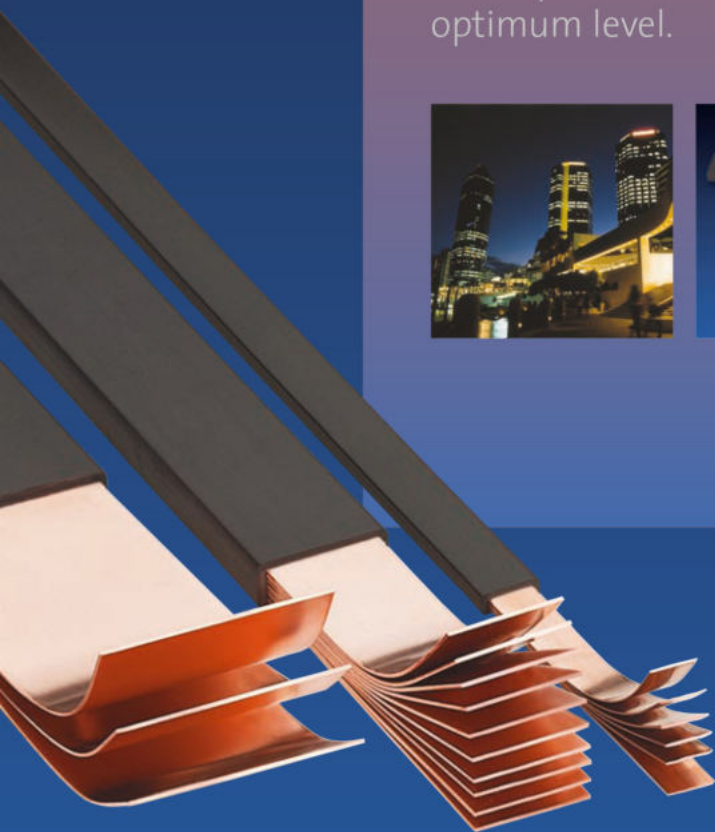
Maxiflex® – flexible insulated copper conductors by KUPFERRHEYDT



Maxiflex® conductors by Kupferrheydt are manufactured out of highly flexible copper strips either in bare or tinned version. They are insulated with high quality mechanical, electrical and self-extinguishing PVC.

Typical markets are power generation, machinery manufacturer, transport, electrical equipment manufacturers, switchgear and control equipment.

Where flexibility, small installation height and easy connection is important, you will find the implementation of Maxiflex® on an optimum level.



For a maximum of flexibility in industrial applications

for example in switchgear and controlgear, switchboards, motors, generators, uninterrupted power supply units, surveillance installation, battery connectors.

The benefits of Maxiflex®:

Tested and certified: UL recognized, RoHS & REACH Compliant

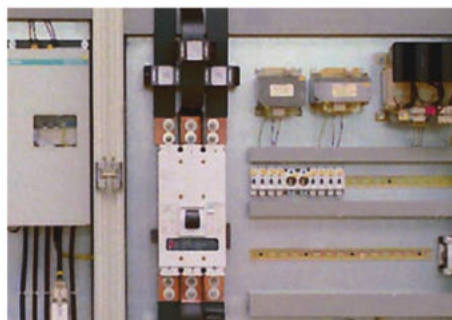
UL recognized File-No. E 470759 & E 233476

Wide variety of bending, folding and twisting possibilities

Ideal alternative to large cables and rigid busbars

Huge dimensions variety, easy to use, saves time, space and costs

Standard length: 2 m
Other length possible on request
Form of delivery: as semi product in individual length or as pre-finished component (KIT) ready for installation.
Available in plain or tin plated copper.



[Technical characteristics >](#)

Maxiflex®

Technical characteristics

Flexible insulated copper conductors
by KUPFERRHEYDT

Copper

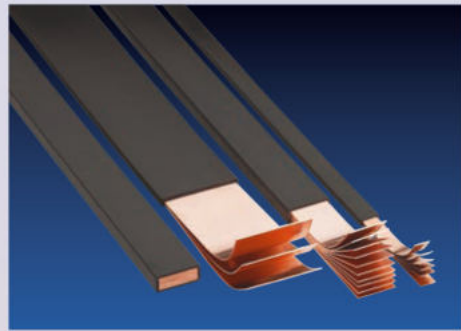
Copper strip according to EN 13599
Cu-ETP R200
Thickness of the strips: 0,8 mm and 1,0
Width of the strips: 9 mm up to 100 mm
Quantity of lamination: 2 up to 10
Galvanic surface treatment
on request

Insulation

High quality black PVC insulating
self-extinguishing according to UL 94 V0
Wall thickness: min. 1,65 mm
Tight fit of insulation
Elongation: > 200 %
Tensile strength: > 15 N/mm²

Electrical characteristics

Dielectric strength of the insulation: > 20 KV/mm
Operating voltage: 1000 V AC / 1500 V DC
Operating temperature: -40° C* upto 105° C*
* not during dynamic pressure



Further informations of our
Maxiflex® conductors, for
manufacturing of Maxiflex®
components and our
comprehensive Maxiflex®
stock upon request



KUPFERRHEYDT

KUPFERRHEYDT GmbH, Nobelstraße 18, 41189 Mönchengladbach-Wickrath
Telefon: +49 (0) 2166 956 0, Telefax: +49 (0) 2166 956 222
info@kupferrheydt.de, www.kupferrheydt.de

www.gindre.com